

# RAYEX REC LB SERIES

## FEATURES

- High performance power relay
- PCB terminal and solder lug terminal and flanged case are available
- LED version is available
- Using at control equipment, vending machines, cooking appliances, office machine, domestic appliances, etc.



TUV FILE NO.: R09956267

## ORDERING INFORMATION

**LB1 N** — **12 D T S**

1      2                      3      4      5      6

### 1. Type

LB1(1PDT) : 15A  
 LB2(2PDT) : 12A  
 LB2H(2PDT) : 10A  
 LB4H(4PDT) : 5A

### 2. LED

Nil : Without LED  
 N : With LED

### 3. Coil Nominal Voltage

4. Coil Nominal Voltage Type  
 D: DC  
 A: AC

### 5. Cover Type

Nil : Standard Type  
 T : Test button(Not applicable at LB1)

### 6. Terminal Type

S : Solder Lug / Plug-In Terminal  
 P : PCB Terminal

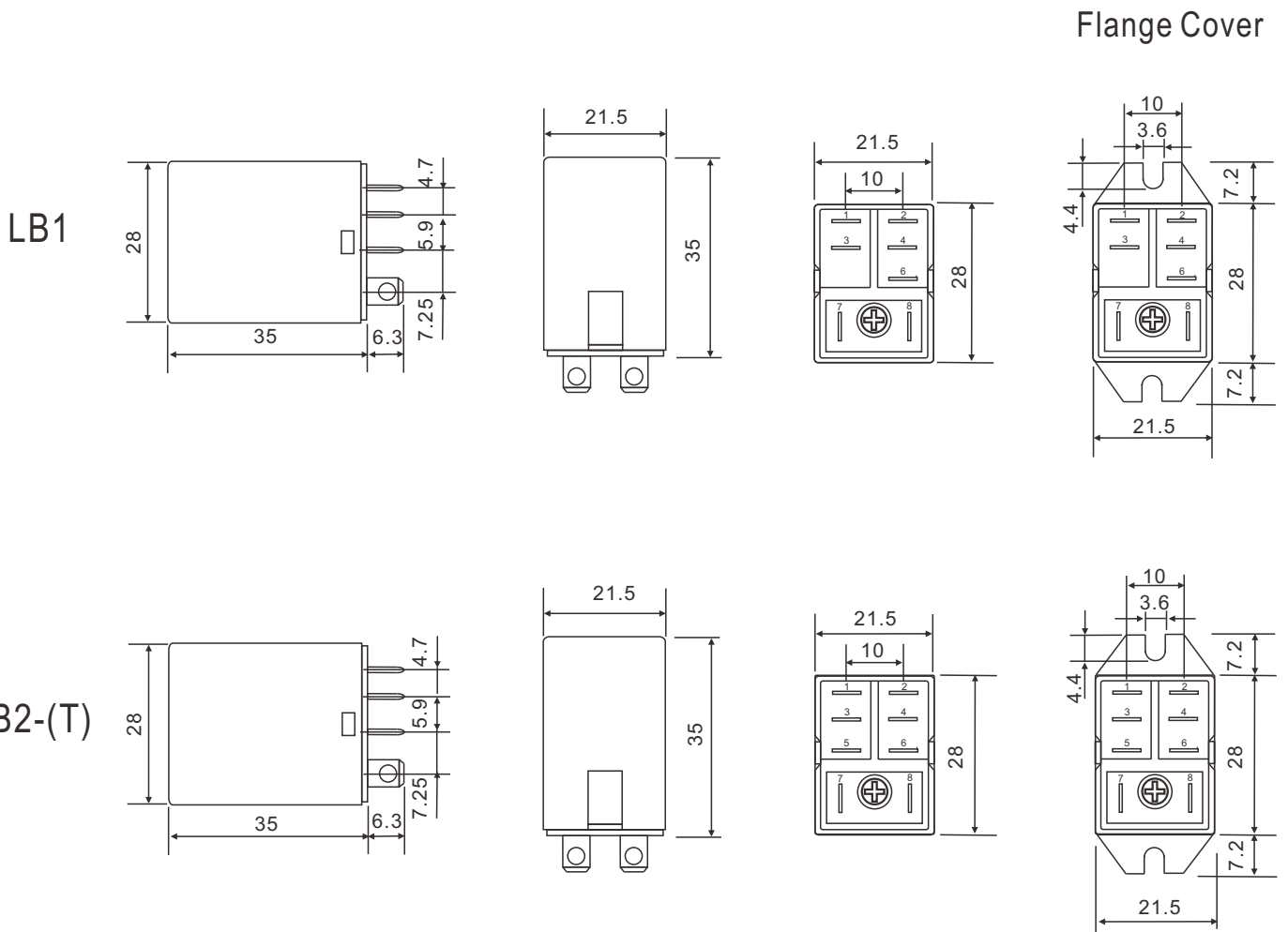
## COIL DATA(at 25°C)

AC 1.2VA				DC 0.9-1.1W				
Coil Nominal Voltage (50/60Hz)	Resistance Tol.±10% (Ohms)	Maximum Pick Up Voltage (V)	Minimum Drop Out Voltage (V)	Coil Nominal Voltage (VDC)	Resistance Tol.±10% (Ohms)	Nominal Current (mA)	Maximum Pick Up Voltage (V)	Minimum Drop Out Voltage (V)
6	10	4.8	1.8	6	40	150	4.5	0.6
12	45	9.6	3.6	12	160	75	9.0	1.2
24	160	19.2	7.2	24	650	37	18.0	2.4
48	670	38.4	14.4	48	2,600	19	36.0	4.8
100/110	3,900	88.0	33.0	100/110	11,000	9	82.5	11.0
220/240	16,000	176.0	66.0					

## CONTACT RATING

LB1 TYPE	Resistive (Cos.θ = 1)	AC 240V / DC 30V	15A	
		AC 240V / DC 24V	15A	TUV
	Inductive (Cos.θ = 0.4)	AC 240V	8A	TUV
LB2 TYPE	Resistive (Cos.θ = 1)	AC 240V / DC 30V	12A	
		AC 240V / DC 24V	10A	TUV
	Inductive (Cos.θ = 0.4)	AC 240V	5A	TUV
LB2H TYPE	Resistive (Cos.θ = 1)	AC 240V / DC 30V	10A	
		AC 240V / DC 24V	10A	TUV
	Inductive (Cos.θ = 0.4)	AC 240V	5A	TUV
LB4H TYPE	Resistive (Cos.θ = 1)	AC 240V / DC 30V	5A	
		AC 240V / DC 24V	5A	TUV
	Inductive (Cos.θ = 0.4)	AC 240V	3A	TUV

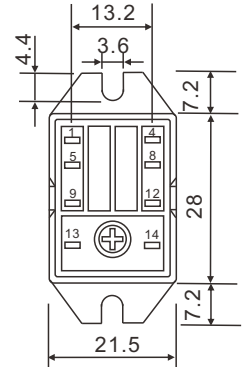
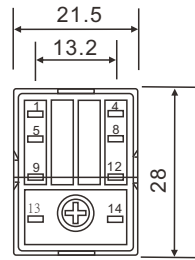
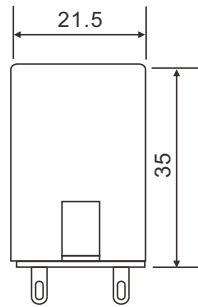
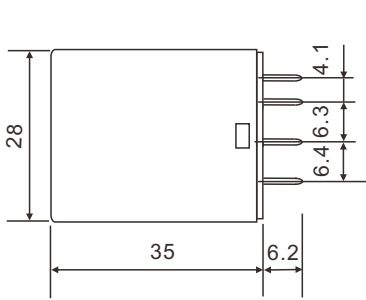
## DIMENSIONS(±0.2mm)



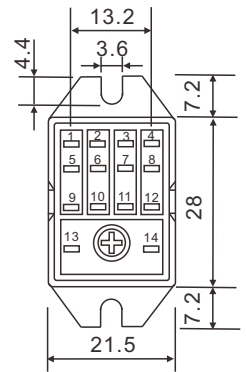
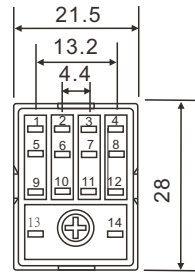
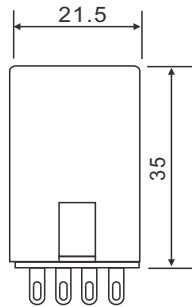
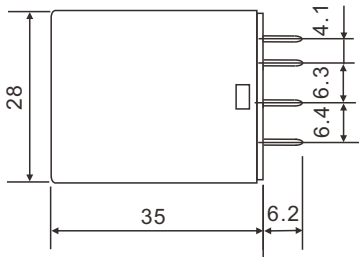
# DIMENSIONS(±0.2mm)

## Flange Cover

LB2H-(T)

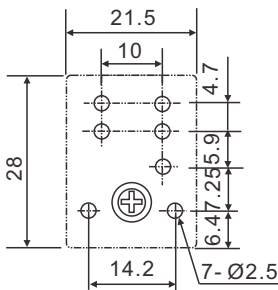


LB4H-(T)

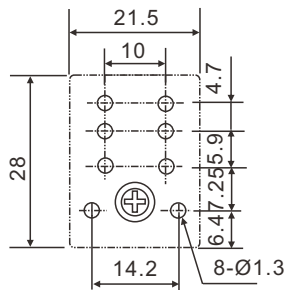


# DRILLING PLAN

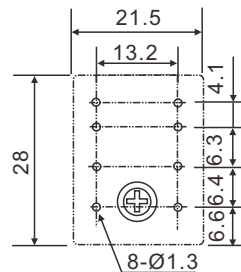
LB1



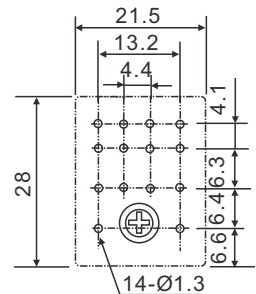
LB2



LB2H

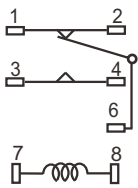


LB4H

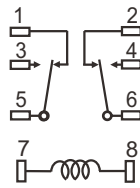


## WIRING DIAGRAM

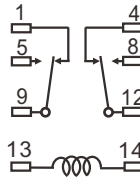
LB1



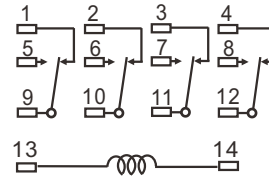
LB2



LB2H



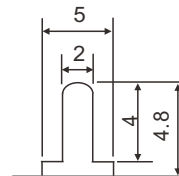
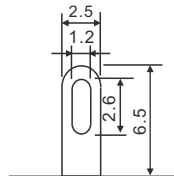
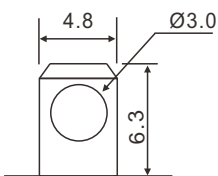
LB4H



## TERMINAL TYPE(±0.2mm)

SOLDER LUG/PLUG-IN

PRINTED CIRCUIT



LB1, LB2

LB2H, LB4H

## GENERAL DATA

Insulation Resistance	1,500 MΩ Min. (DC 500V)
Dielectric Strength	750 VAC, 50/60Hz between contact.
	1,500 VAC, 50/60Hz between all elements.
Contact Material	Agcdo Alloy.
Contact Resistance	100 milliohms max. ( initial value )
Shock Resistance	Malfunction: 10G(11ms) ; Destructive: 100G(6ms)
Vibration Resistance	Malfunction: 10 to 55 Hz. at Double Amplitude of 1.5 mm
	Destructive: 10 to 55 Hz. at Double Amplitude of 1.5 mm
Operation Time	15 ms max.
Release Time	15 ms max.
Temperature Range	- 40°C ~ + 60°C
Expected Life	With operation rate 30/min.
	Mechanical - 10,000,000 operations min.
	Electrical - 100,000 operations min. at rated load.
Weight	37 grams